

Model Question Paper

Reg No:

Name:

RAJAGIRI SCHOOL OF ENGINEERING & TECHNOLOGY
(AUTONOMOUS)

FIRST SEMESTER B.TECH DEGREE EXAMINATION, APRIL 2021

Course Code: 101009/EE100D

Course Name: Principles of Electrical Engineering

Max.Mark:100

Duration: 3 hours

PART A

Answer all questions

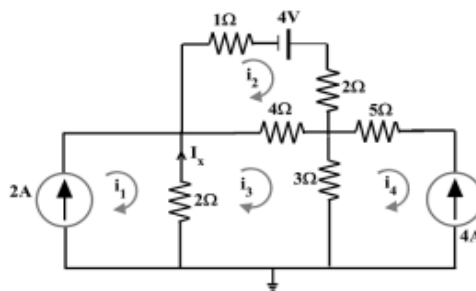
(Answer all questions, each question carries 3 marks)

1. Differentiate between inductance and capacitance parameters.
2. State Kirchoff's laws with an example.
3. State and explain Norton's theorem.
4. Write equations to convert a star connected resistors to a delta connected resistors.
5. For an ac waveform explain average value, rms value and form factor.
6. Explain active, reactive, apparent and complex power.
7. A parallel plate capacitor is constructed of metal plates, each with an area of 0.2 m^2 . The capacitance is 7.9 nF . Determine the plate separation distance.
8. Derive the emf equation of a single phase transformer.
9. Explain the working of a piezoelectric transducer.
10. Draw the basic layout of the electrical distribution system.

PART B

Each question carries 14 marks

11. By using mesh analysis, find the current I_x and voltage across the 4Ω resistor of the circuit shown in the figure and also calculate the power associated with the 4V voltage source. 14 Marks



OR

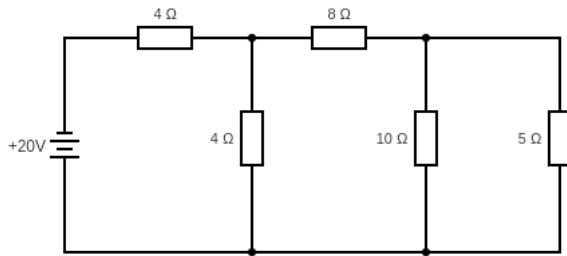
12. Refer figure above and write the nodal equations in terms of node to datum voltages V_1 and V_2 . Solve for V_1 and V_2 . Also determine the current through the 5Ω resistor. 14 Marks

13. (a) State Thevenin's Theorem.

4 Marks

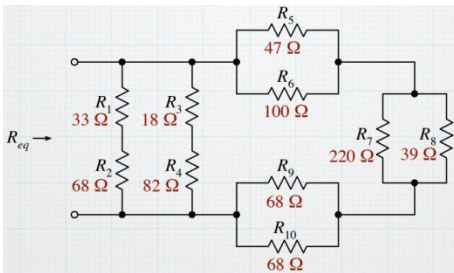
(b) Calculate the current through the load resistance (R_L) = 5 Ω .

10 Marks



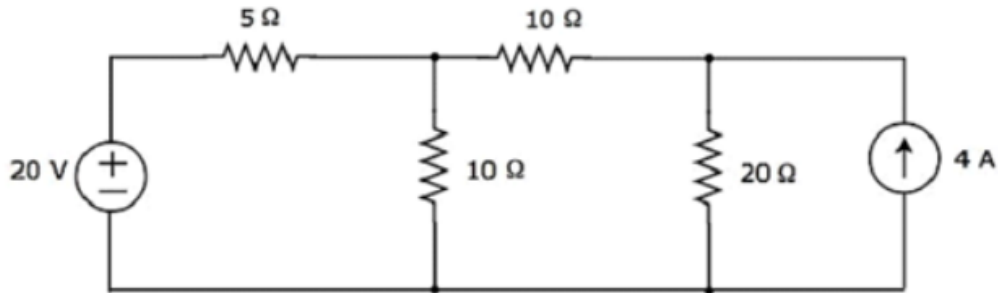
OR

14. (a) Find the equivalent resistance looking into the indicated port of the circuit shown below. 7 Marks



(b) Find the current flowing through 20 Ω resistor of the following circuit using superposition theorem.

7 Marks



15. (a) Give the equations, waveforms and phasor diagram of three phase voltages.

7 Marks

(b) Enumerate the advantages of a three phase system over the single phase system.

7 Marks

OR

16. (a) A resistance of 10 Ω , inductance of 0.4 H and capacitance of 120 μF are connected in series and are fed by a 230 V, 50 Hz supply.

Find i) inductive reactance ii) capacitive reactance iii) impedance of the circuit iv) admittance of the circuit v) power factor vi) active and reactive power. 7 Marks

(b) A 240 V, 50 Hz AC supply is applied a coil of 0.08 H inductance and 4 Ω resistance connected in series with a capacitor of 8 μF . Calculate the following –

(i) Impedance (ii) Circuit current (iii) Phase angle between voltage and current (iv) Power factor (v) Power consumed (vi) Resonant frequency (vii) Q-factor of the circuit at resonant frequency.

7 Marks

17. A transformer has 500 turns of the primary winding and 10 turns of the secondary winding.
- a) Determine the secondary voltage if the secondary circuit is open and the primary voltage is 120 V. 7 Marks
- b) Determine the current in the primary and secondary windings, given that the secondary winding is connected to a resistance load 15Ω ? 7 Marks

OR

18. (a) Draw and explain the construction and working of a DC motor. 7 Marks
- (b) What are the various types of DC motors. Explain. 7 Marks
19. (a) With circuit diagram explain the working of different types of moving iron instruments also derive its deflecting torques. 7 Marks
- (b) Explain the working of a thermocouple. What are the Common Causes for Thermocouple Temperature Measurement Errors? 7 Marks

OR

20. (a) What is electrical earthing? Draw and explain pipe earthing. 7 Marks
- (b) Draw and explain the working of a moving coil instrument. 7 Marks